

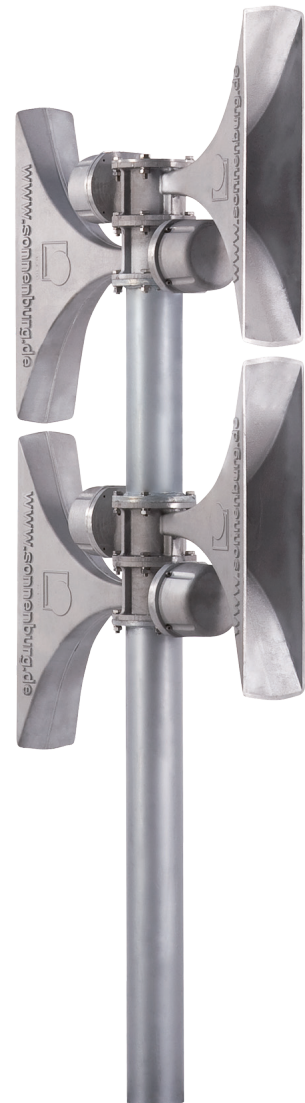


# SES-2 500-A+AW CH2

Electronic sirens are increasingly used for mass warning systems due to their advantages of low energy consumption and low maintenance effort. Their modular construction offers individual structure and power stages possibilities.

## ADVANTAGES & FUNCTIONS

- modular system
- variable siren signals with digital signal processing
- extremely high efficiency dB/W
- power regulation of the siren signal
- compensation of battery voltage changes and acoustic radiator impedance
- short-circuit proof
- excess temperature surveillance
- silent test of acoustic radiators
- automatic system test
- status indication
- internal control unit
- system function surveillance via micro prozessor
- service programme for on-site diagnosis
- alert memory
- 2 batteries
- power output 500 W True RMS per amplifier



## TECHNICAL DATA

licence number BZS AL 11-801

### IN GENERAL

sound level in dB(A) in 30 m distance	
for alert "General"	109.4
for alert "Water"	109.3
fundamental frequency alert "General"	250 Hz / 400 Hz
fundamental frequency alert "Water"	200 Hz
number of acoustic radiators	4
humidity	0 % - 100 %

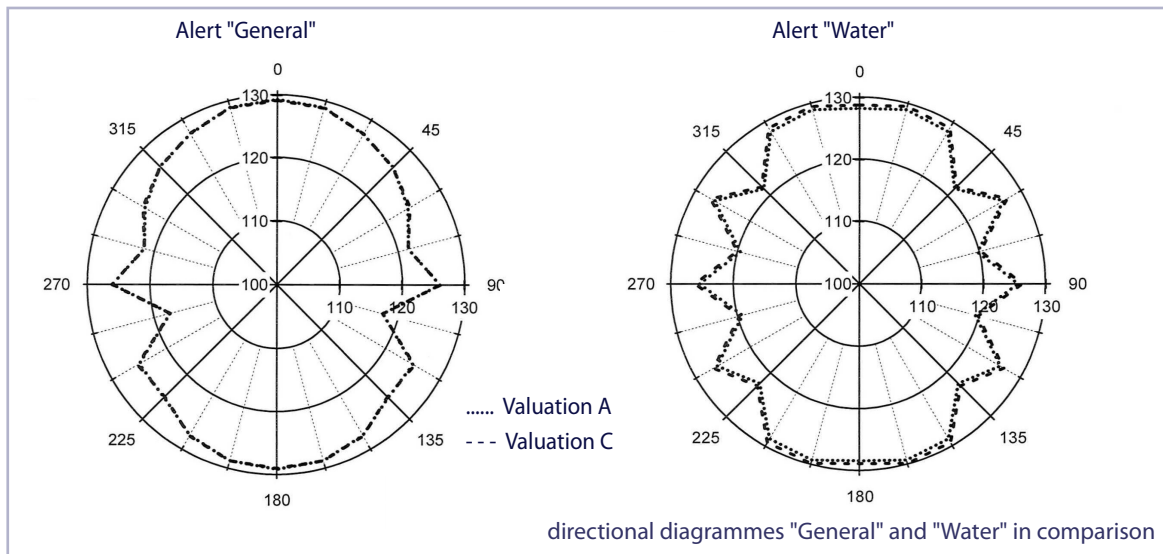
### ACOUSTIC RADIATORS

acoustic radiators made of	material ALSi7Mg0,35F - see water resistant aluminium alloy
temperature range	-50° C to +70° C
screw set	V2A
overall weight	38.4 kg
overall height	1386 mm
Breite x Tiefe	830 x 160 mm

## TECHNICAL DATA SES-2 500-A+AW CH2

### CONTROL UNIT

number of acoustic radiators	1
power output RMS	500 W
mains voltage	230 V <sub>AC</sub>
1) power input in stand-by mode	3,5 V A
power input at battery charge	93 W
electric power supply FGI	24 V / 2 W
number of potential free inputs	8
number of high side transistor outputs	16
status identification via service interface	all status identifications can be displayed at a service interface via a service programme
battery voltage / capacity (C20)	24 V / 40 Ah
battery capacity	5 days with 4 signals "General" alert + 2 signals "Water" alert + 3 days energy reserve for remote control with 2 W
battery reserve	11 %
temperature range electronics	-40° C to +70° C
temperature range batteries	-25° C to +60° C
cabinet dimension (B x H x D)	600 x 600 x 210 mm
weight	64 kg
colour	RAL 7035



### TEST RESULTS

	sound pressure level for alert "General"	sound pressure level (dB)*		sound pressure level for alert "Water"	sound pressure level (dB)
Valuation A	specific value at a distance of 4 m	126.9 dB	Val. A	specific value at a distance of 4 m	126.8 dB
	minimal level (105°)	117.5 dB		minimal level (105°)	119.3 dB
	maximal level (0°)	129.4 dB		maximal level (0°)	129.1 dB
	calculated specific value at 30 m	109.4 dB		calculated specific value at 30 m	109.3 dB
Valuation B	specific value at a distance of 4 m	126.8 dB	Val. B	specific value at a distance of 4 m	127.2 dB
	minimal level (105°)	117.6 dB		minimal level (105°)	119.8 dB
	maximal level (0°)	129.2 dB		maximal level (0°)	129.6 dB
	calculated specific value at 30 m	109.3 dB		calculated specific value at 30 m	109.7 dB

\*) Average test results of several signal cycles